



TISBURY
MASSACHUSETTS

Water Resources Committee

Introduction to the Comprehensive Wastewater Management Plan

Public Workshop #1

ENVIRONMENTAL
 PARTNERS

Agenda

- Review Workshop Goals
- Introduce Project Team
- Introduce Comprehensive Wastewater Management Planning Process
 - Why do we need to do this?
 - Where are we now?
 - What comes next?
- Discussion
- Next Steps & Closing



Workshop Goals

- Introduce residents to:
 - The project team
 - Tisbury's watersheds and nitrogen impairments (TMDLs)
 - The Comprehensive Wastewater Management Planning (CWMP) process
- Understand community concerns about watershed needs and the CWMP



Project Team

Core Working Group

- Town of Tisbury
 - Select Board / Wastewater Commissioners
 - Town Administrator
 - Water Resources Committee
 - Ben Robinson - Chair, Planning Board
 - John Best, Conservation Commission
 - Nancy Gilfoy, Finance Committee
 - Larry Gomez, Select Board
 - Michael Loberg, Board of Health
 - Jared Meader, DPW/Wastewater Department
- Environmental Partners, Consultant

Regulatory and Regional Agencies

- Martha's Vineyard Commission
- Massachusetts Department of Environmental Protection (MassDEP)
- Massachusetts Environmental Policy Act (MEPA) Office
 - Executive Office of Energy and Environmental Affairs (EOEA)



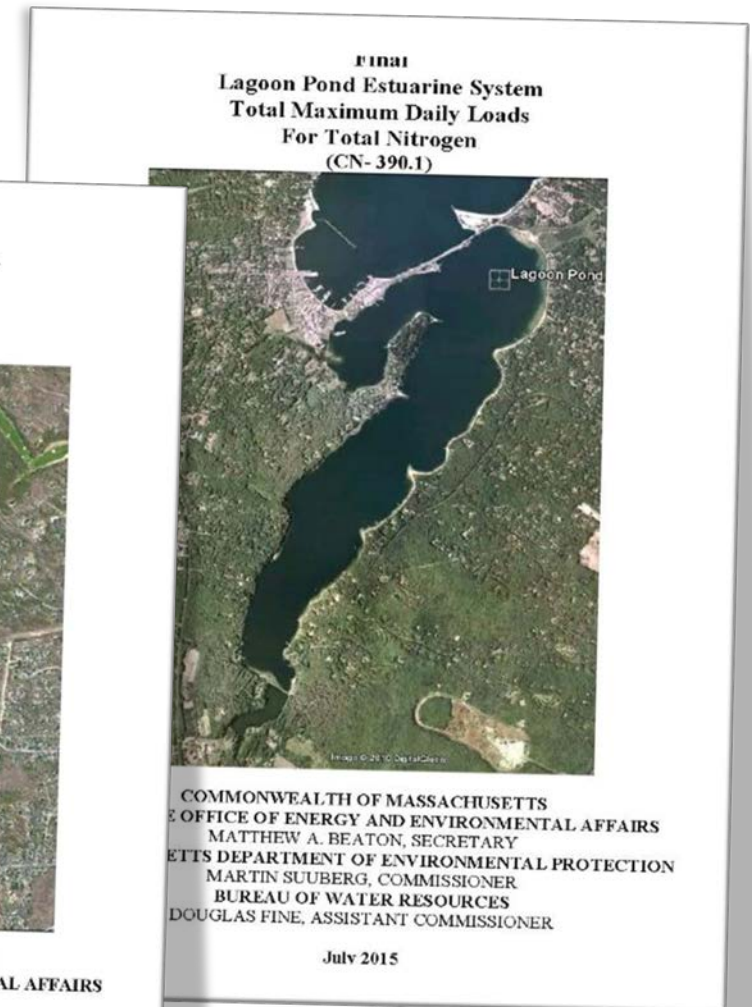
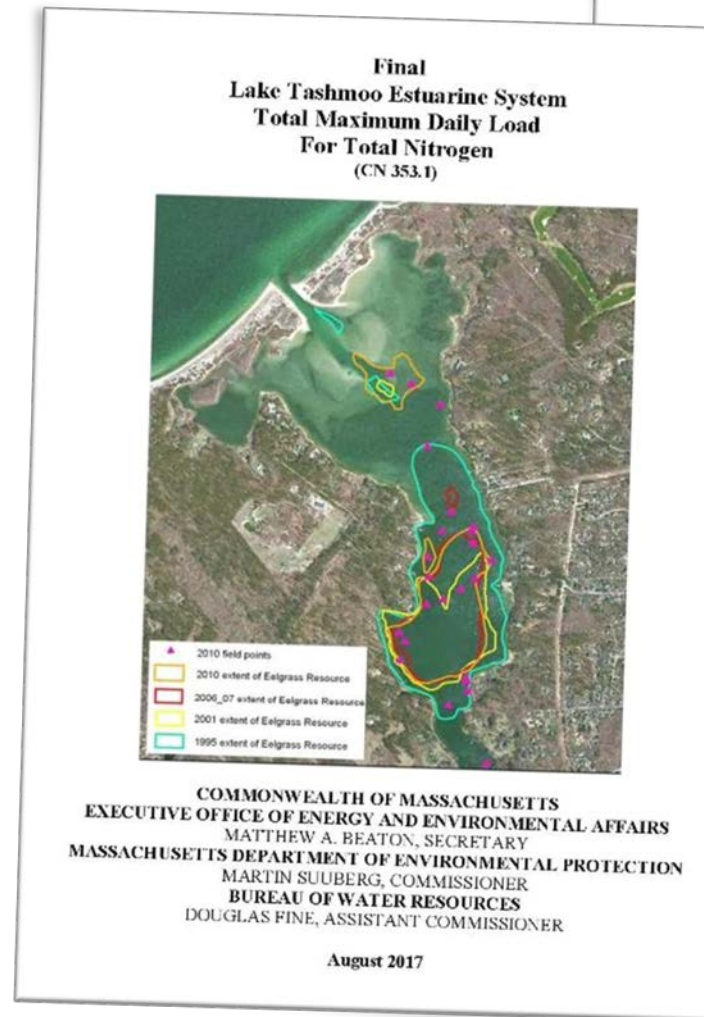
Stakeholder Groups

- Lagoon Pond Association
- MV Shellfish Group
- Tisbury Town Library
- Tisbury Sewer Advisory Committee
- Tisbury Vision Forum
- Tisbury Waterways, Inc.
- Vineyard Conservation Society

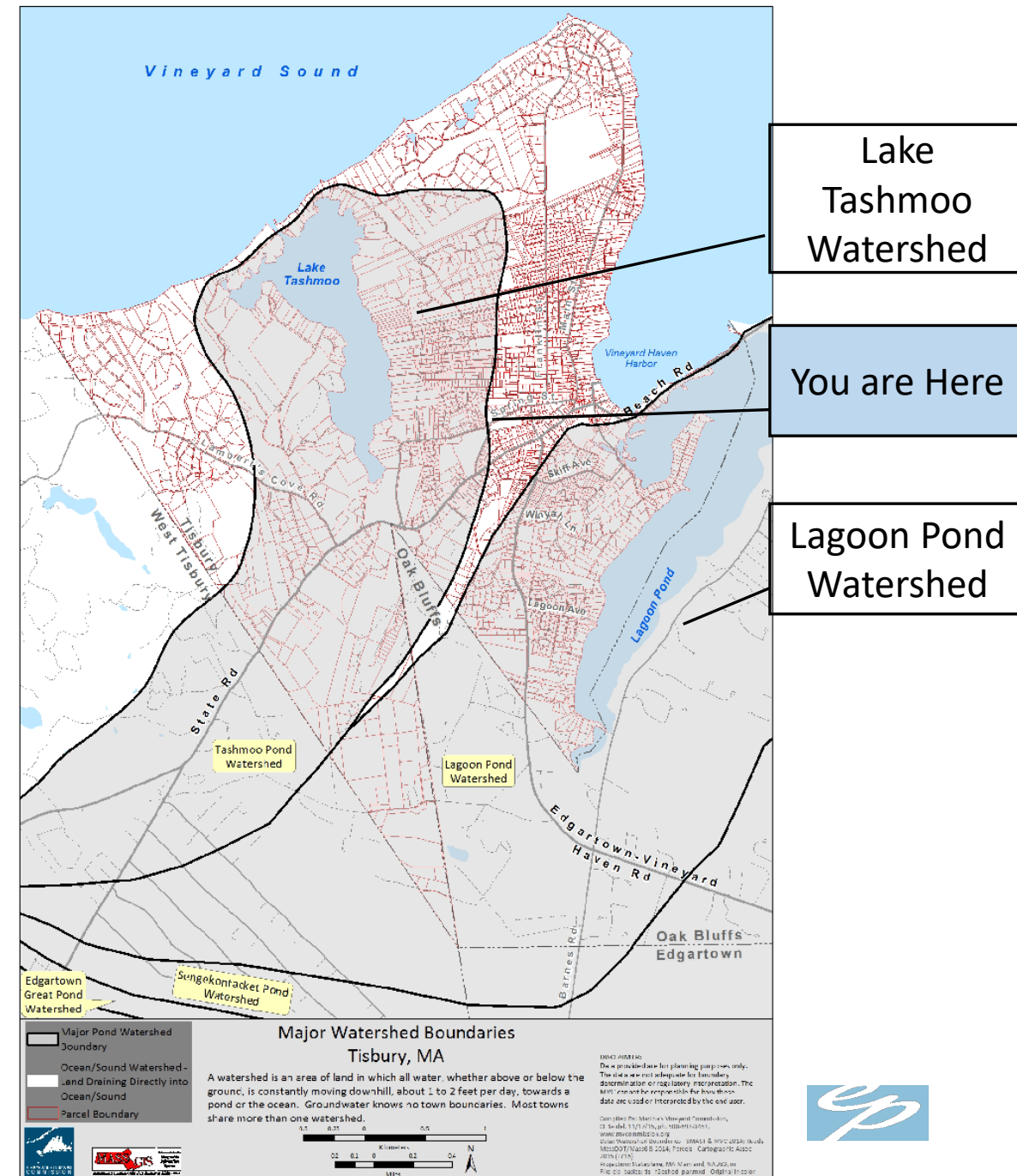


Why does Tisbury need a CWMP?

- To identify a long-term plan for our wastewater management that considers
 - environmental goals
 - housing needs
 - economic development
 - while also being fiscally sustainable
- To improve water quality
- Address regulatory thresholds of nitrogen discharges into our threatened embayments
- Funding support



This map shows the Tisbury area and its surrounding basins. The Tisbury town area is outlined with a dashed black line. Key roads shown include Franklin Street, Main Street, Beach Road, State Road, Edgartown Road, West Spring Street, and Lamberts Cove Road. Several basins are labeled, including Tisbury Coastal Basin, Tashmoo Pond Basin, Lagoon Pond Basin, Oak Bluffs Coastal Basin, Crystal Lake Basin, Oak Bluffs Harbor, Sengekonta Pond Basin, Edgartown Great Pond Basin, and West Tisbury. A blue box in the top right corner contains the text "You are Here" with a line pointing to a location on the map.



Lagoon Pond Nitrogen Total Maximum Daily Load (TMDL)

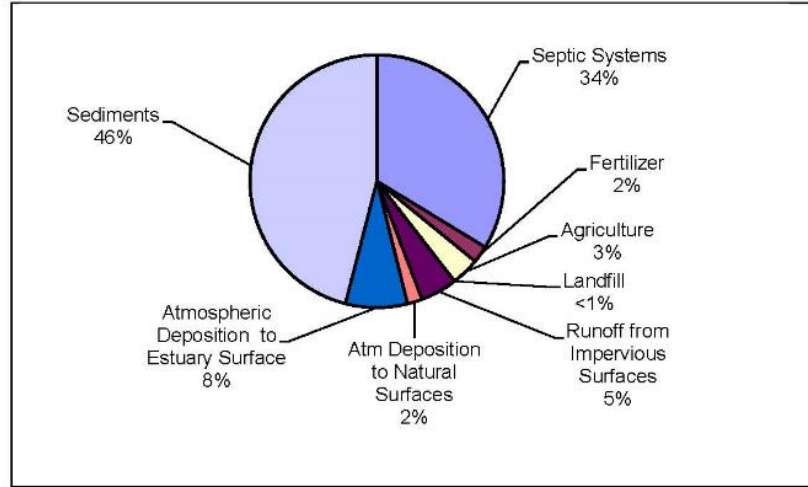


Figure ES-A: Percent Contributions of All Nitrogen Sources to Lagoon Pond

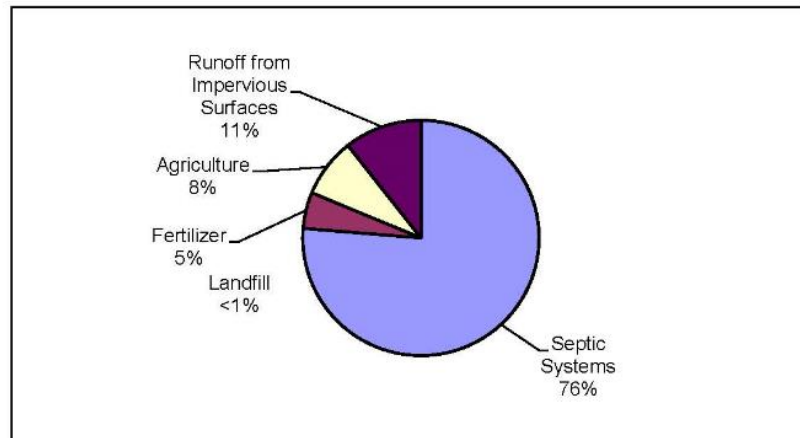
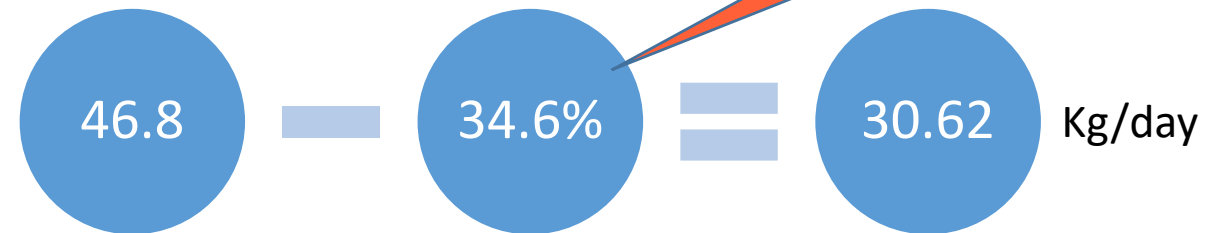


Figure ES-B: Percent Contributions of Controllable Nitrogen Sources to Lagoon Pond

- “The recommended method of TMDL implementation will likely be a combination of reducing the loadings from any and all sources of N in the watershed.”

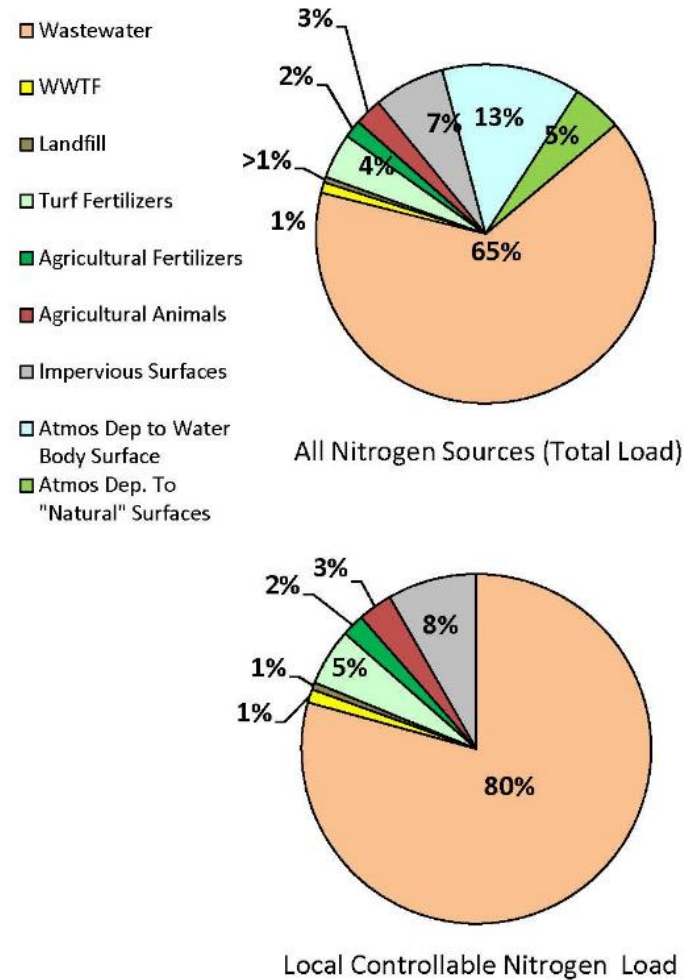
- Total Watershed Nitrogen Load:



- “The primary goal of TMDL implementation will be...reducing the loadings from on-site subsurface wastewater disposal systems by **50%.**”

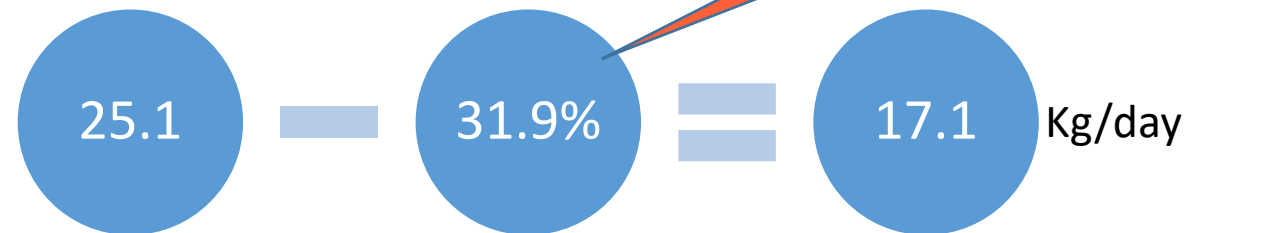
Lake Tashmoo Nitrogen Total Maximum Daily Load (TMDL)

Figure ES-1: Percent Contributions of Nitrogen Sources to Lake Tashmoo



- “Most of the “controllable” N load (80%) is from septic systems, with other controllable N contributions coming from runoff of impervious surfaces, wastewater treatment facilities, landfill, agricultural activities and fertilizers.”

- Total Watershed Load:



- “The primary goal of the TMDL...reducing the loadings from on-site subsurface wastewater disposal systems in the watershed by **42.5%.**”

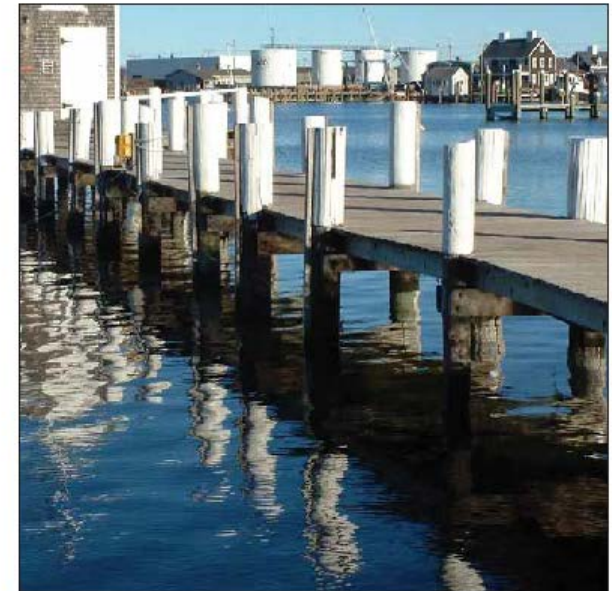
What is a Comprehensive Wastewater Management Plan?

- Guided by the Town's goals for growth and development
- Planning Board is working on a new Master Plan

2021 ATM: ARTICLE 22 TO FUND DEVELOPMENT COSTS OF THE COMPREHENSIVE MASTER PLAN To see if the Town will vote to appropriate and transfer from Unreserved Fund Balance in FY 2022 the sum of One Hundred Forty-Five Thousand Dollars (\$145,000) to fund all costs (incidental and related) toward developing a comprehensive Master Plan for the Town of Tisbury, and re-codifying the Town of Tisbury's Zoning Bylaws under the direct supervision of the Planning Board; or take any action relative thereto.



TISBURY COMMUNITY DEVELOPMENT PLAN

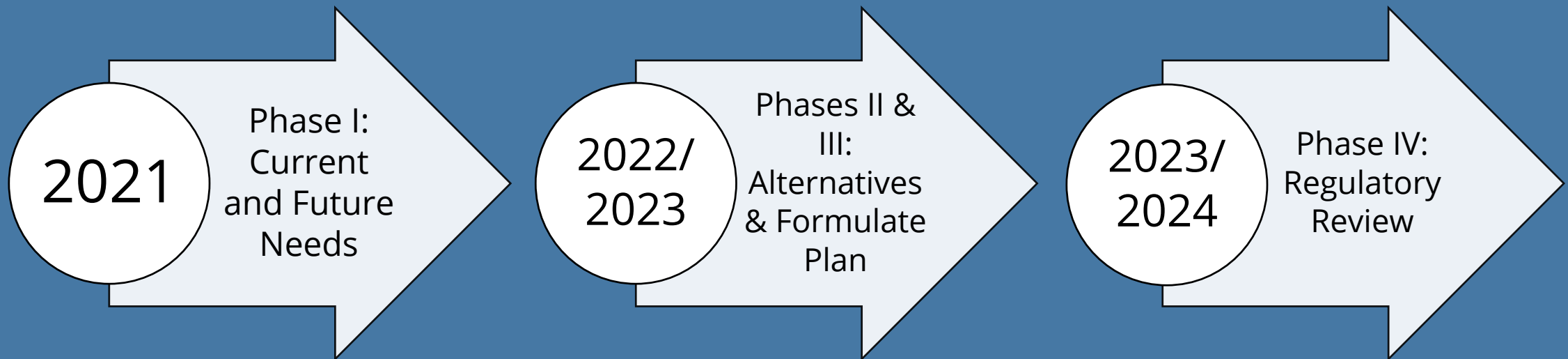


MVC 8/4/2004



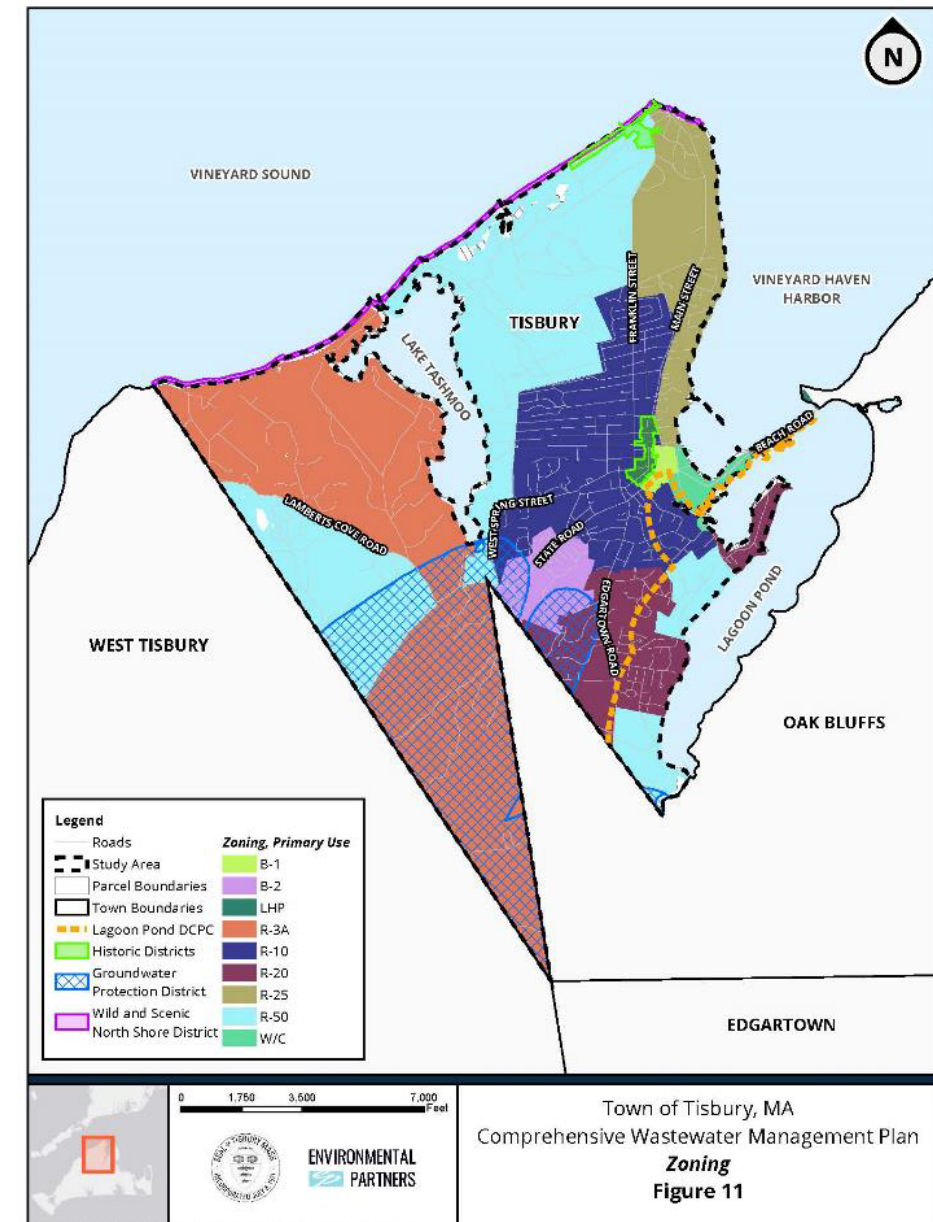
What is a Comprehensive Wastewater Management Plan?

- Plan of Study establishes the scope of the plan
- Town-wide water quality assessment and solutions
- 20-year planning to meet water quality goals



Phase 1 – Current and Future Needs

- Gather Information
 - Board of Health Septic Systems Data
 - MEP / TMDLs
 - Existing / Previous Studies
 - Regional Plans
 - Local Regulations
 - Existing Infrastructure
 - Resident Input
- Establish Existing Conditions
- Establish Future Conditions
- Needs Analysis



U:\proj\GIS\Tisbury\WWM\Tisbury_Civil\Tisbury_Civil_Mapping\Tisbury_Civil_Mapping.aprx

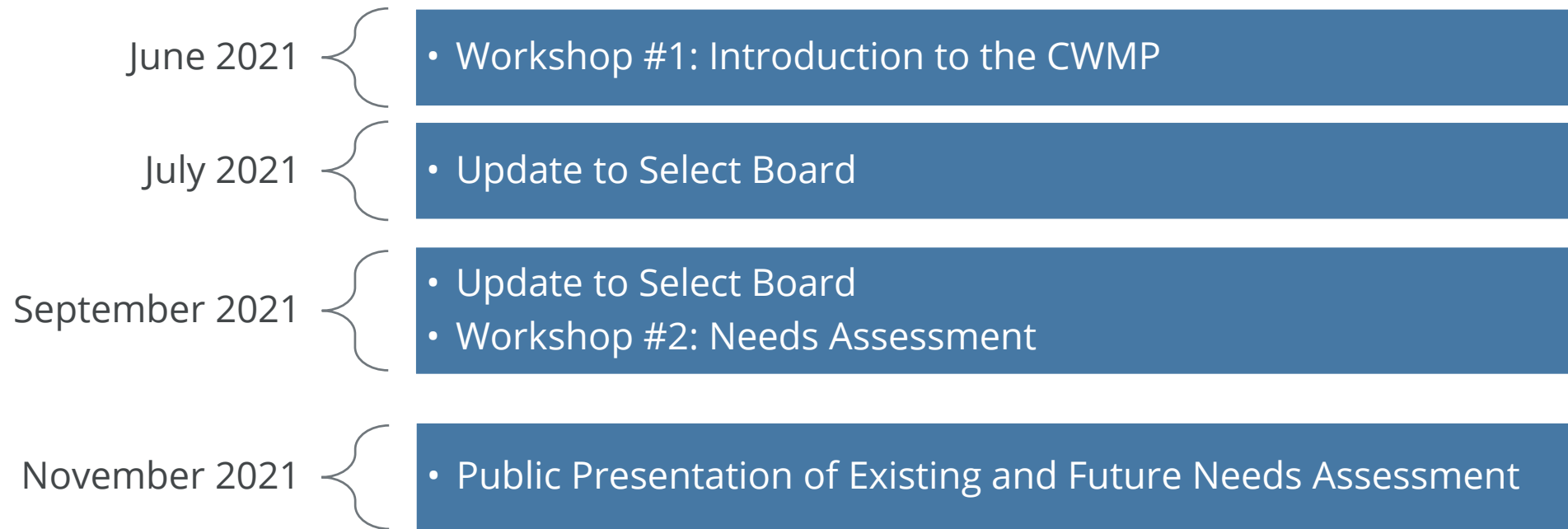
Discussion Topics

- Goal: Understand community concerns about watershed needs and the CWMP
- For example:
 - From Board of Health Regulations, *"...the presence of excess nitrogen in water resources contributes to undesirable algal and aquatic plant growth, destroying wildlife habitat and degrading the waters for shellfishing, recreation and other public purposes.."*
 - From 2004 CDP (MVC), *"The greatest threats to water quality are the nitrogen loading from septic systems."*
 - 2005 Master Plan Principals and Objectives, *"Natural Resources: Make protection and restoration of our natural environment our number one priority."*



Questions and Discussion

Next Steps: Project Team



Next Steps: Feedback and Information

- Email questions, concerns and feedback
 - CWMP@tisburyma.gov
- Bookmark and visit the Water Resources Committee Page
 - <https://www.tisburyma.gov/water-resources-committee>





TISBURY
MASSACHUSETTS

Thank You

CWMP Public Workshop #1

ENVIRONMENTAL
 PARTNERS