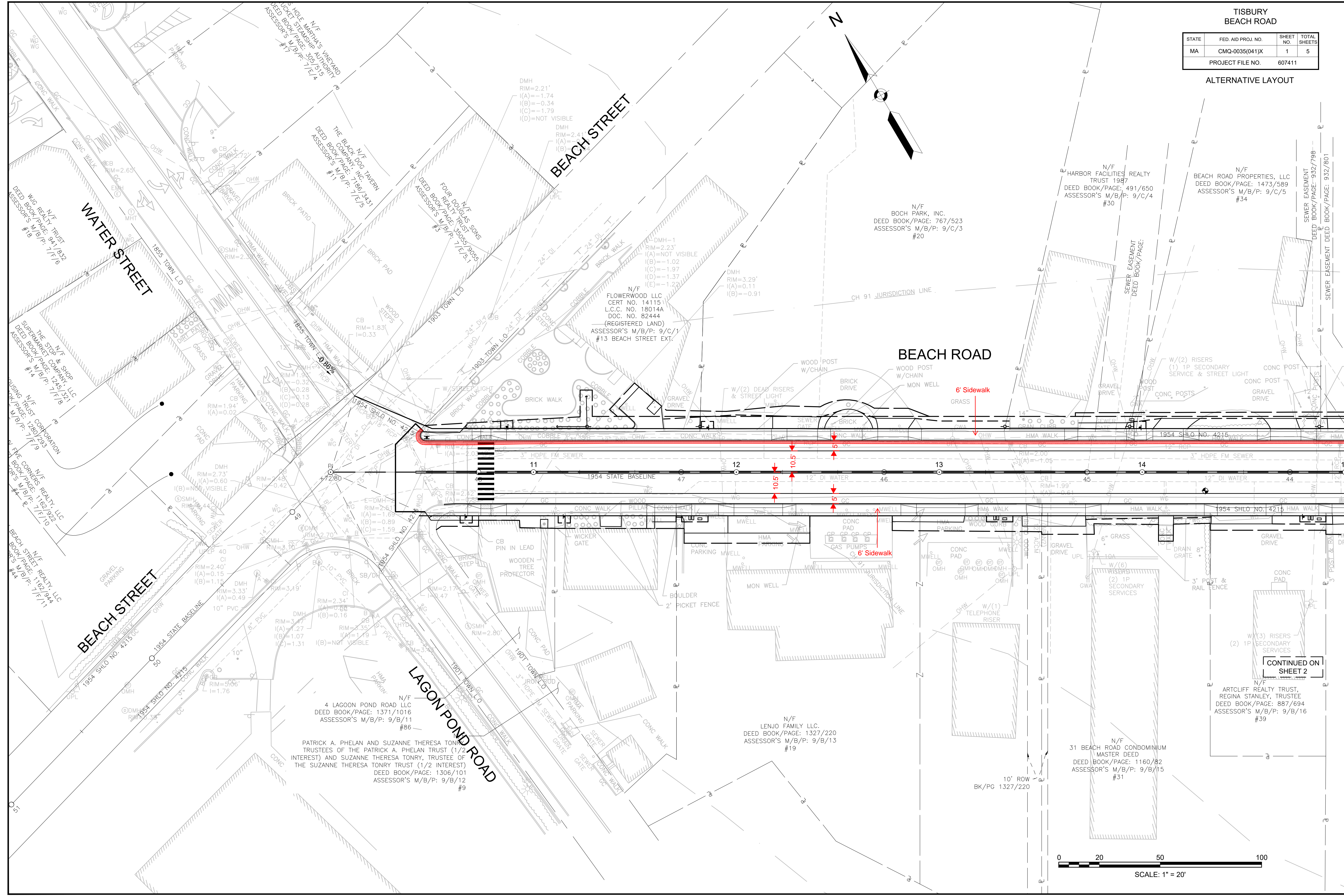


TISBURY
BEACH ROAD

STATE	FED. AID PROJ. NO.	SHEET NO.	TOTAL SHEETS
MA	CMQ-0035(041)X	1	5
PROJECT FILE NO.		607411	

ALTERNATIVE LAYOUT



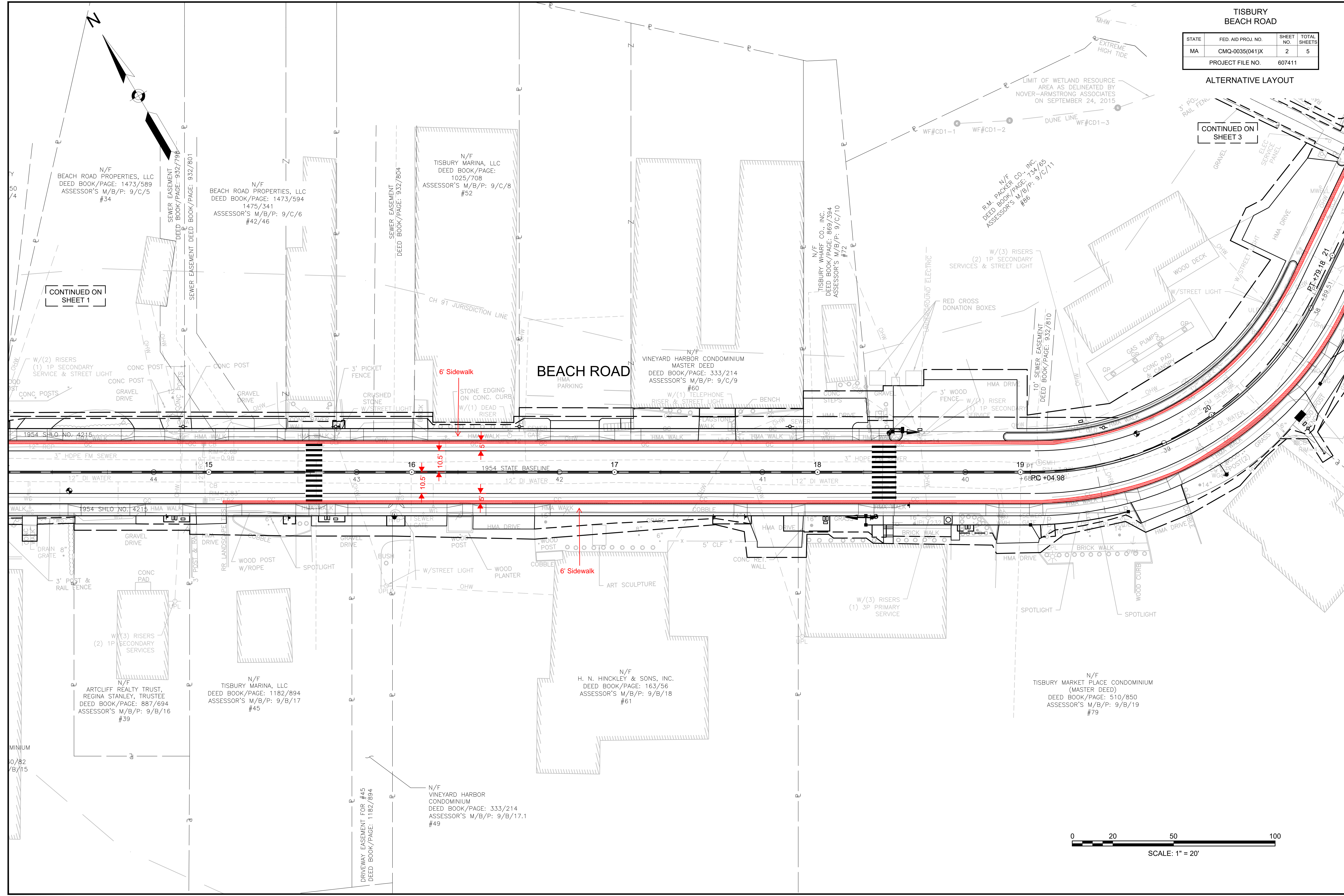
CONTINUED ON
SHEET 2

TISBURY
BEACH ROAD

STATE	FED. AID PROJ. NO.	SHEET NO.	TOTAL SHEETS
MA	CMQ-0035(041)X	2	5
PROJECT FILE NO.		607411	

ALTERNATIVE LAYOUT

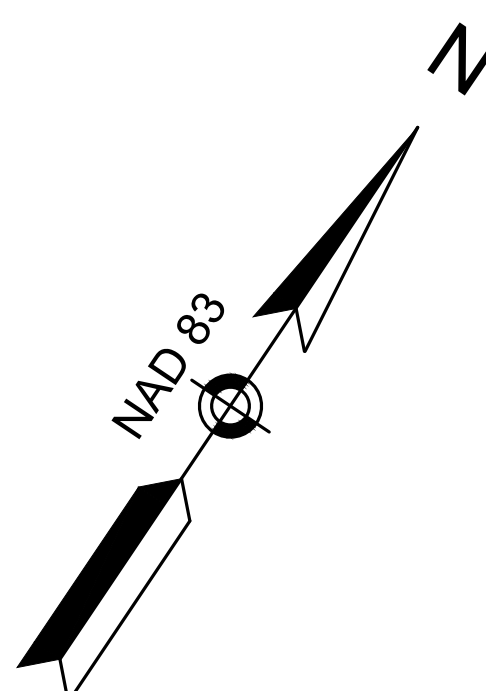
CONTINUED ON
SHEET 3



TISBURY BEACH ROAD

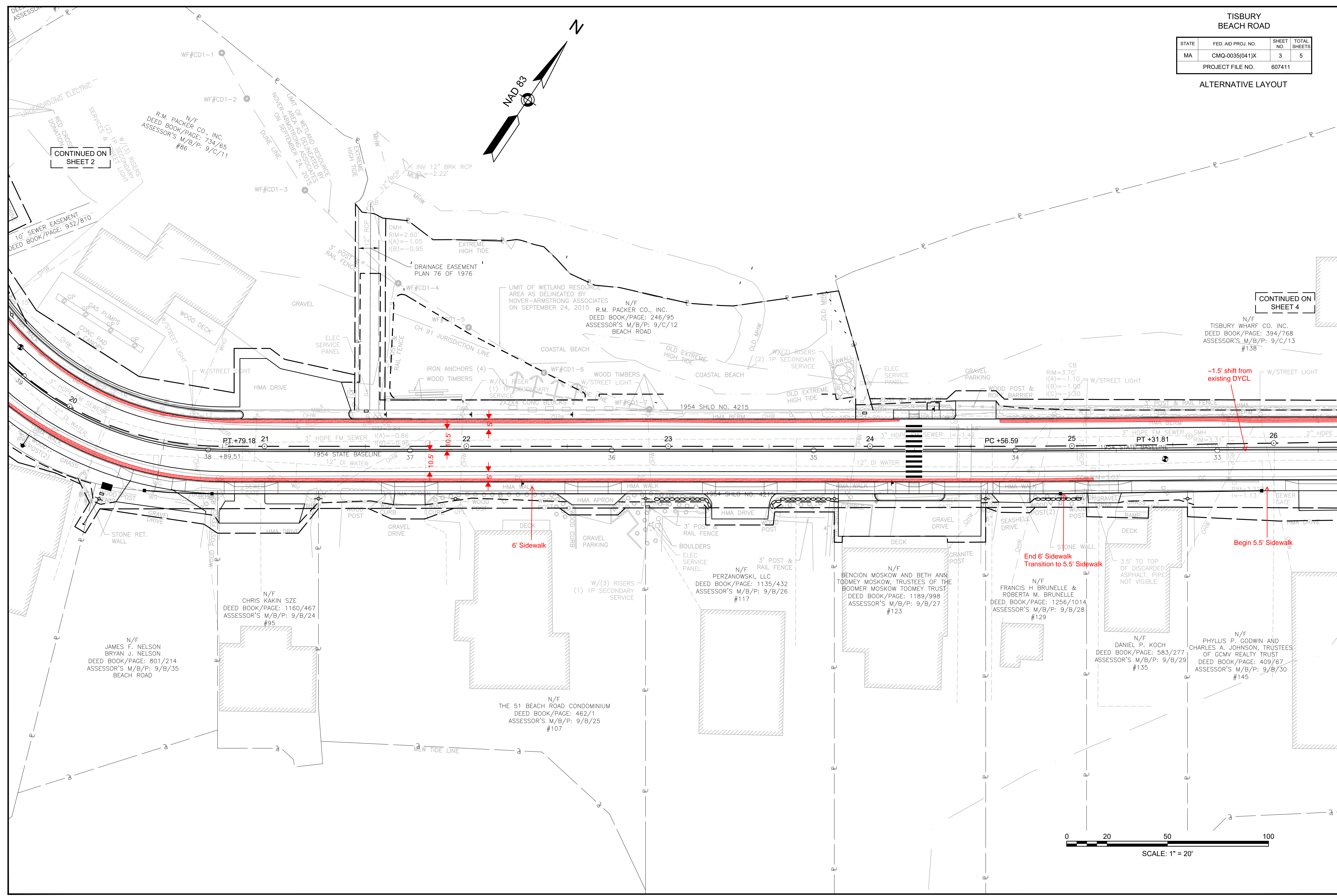
STATE	FED. AID PROJ. NO.	SHEET NO.	TOTAL SHEETS
MA	CMQ-0035(041)X	3	5
PROJECT FILE NO.		607411	

ALTERNATIVE LAYOUT



CONTINUED ON SHEET 2

CONTINUED ON SHEET 4

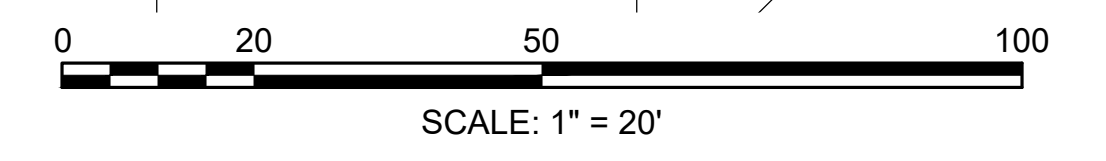


-1.5' shift from existing DYCL

6' Sidewalk

End 6' Sidewalk Transition to 5.5' Sidewalk

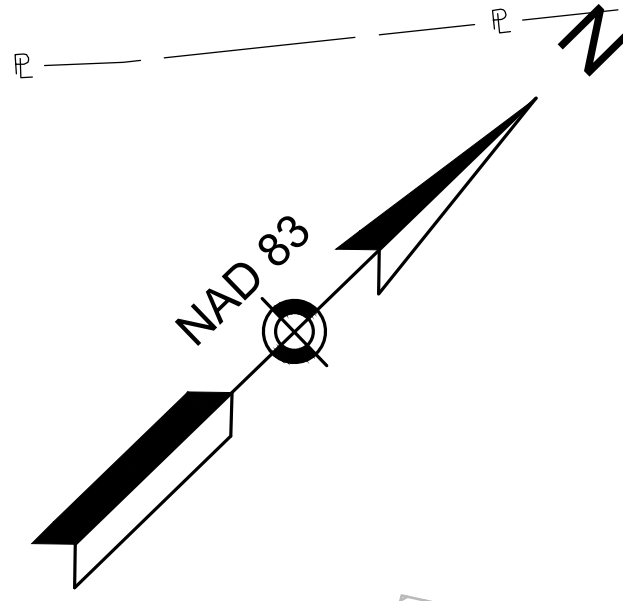
Begin 5.5' Sidewalk



TISBURY BEACH ROAD

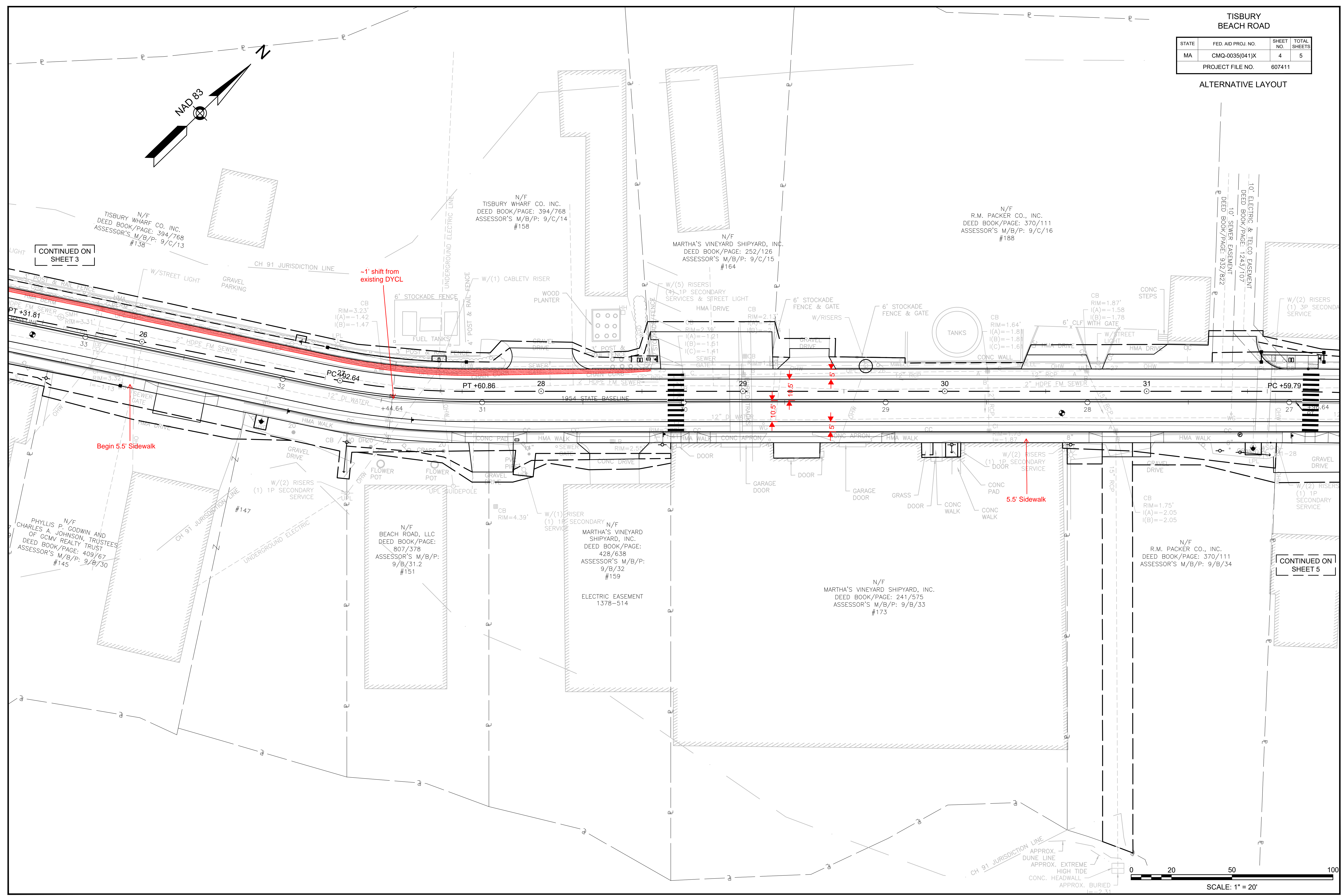
STATE	FED. AID PROJ. NO.	SHEET NO.	TOTAL SHEETS
MA	CMQ-0035(041)X	4	5
PROJECT FILE NO.		607411	

ALTERNATIVE LAYOUT



CONTINUED ON SHEET 3

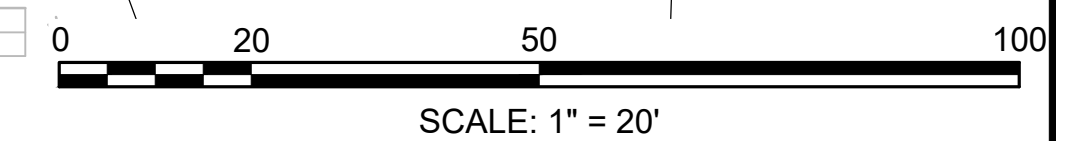
CONTINUED ON SHEET 5



Begin 5.5' Sidewalk

-1' shift from existing DYCL

5.5' Sidewalk

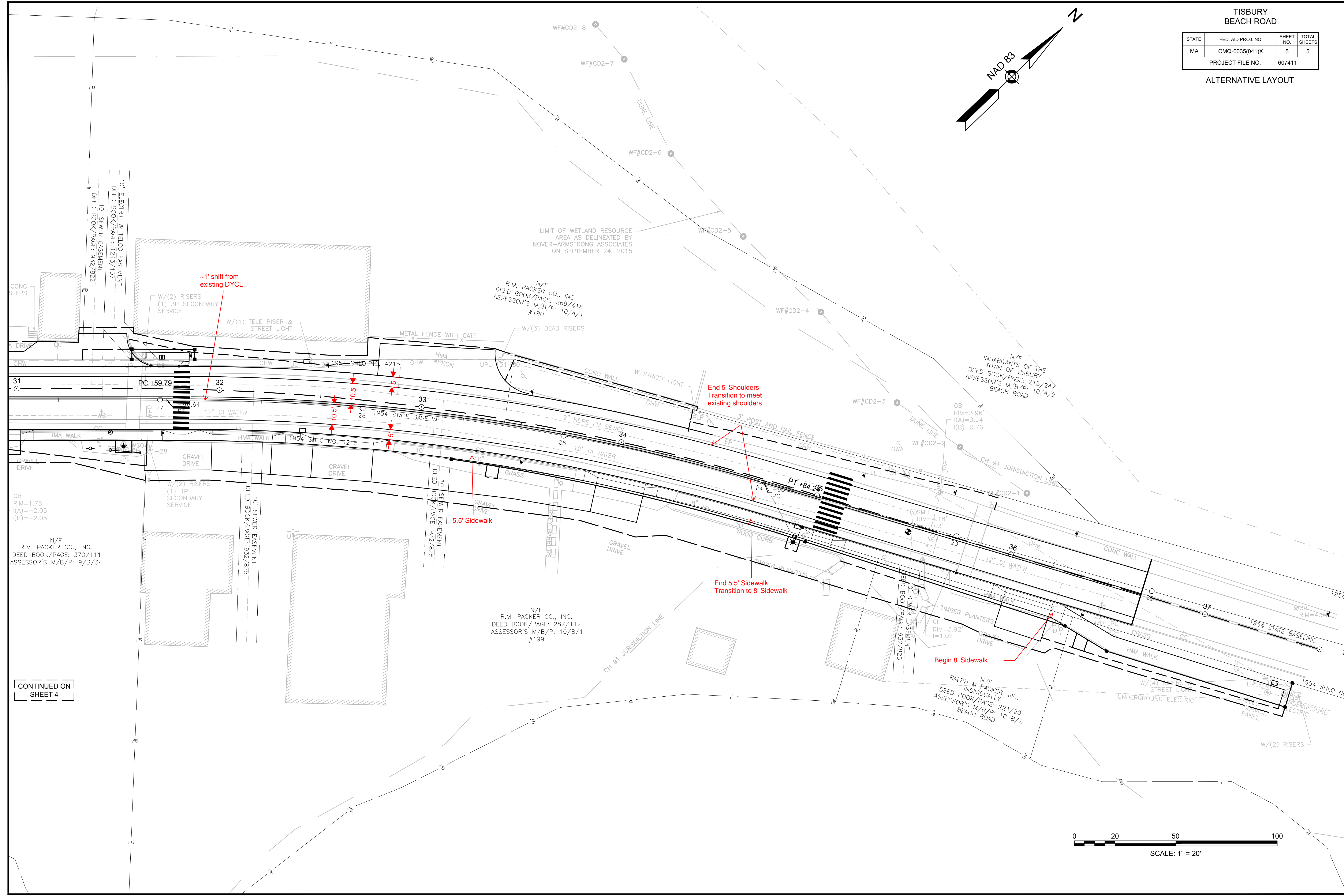
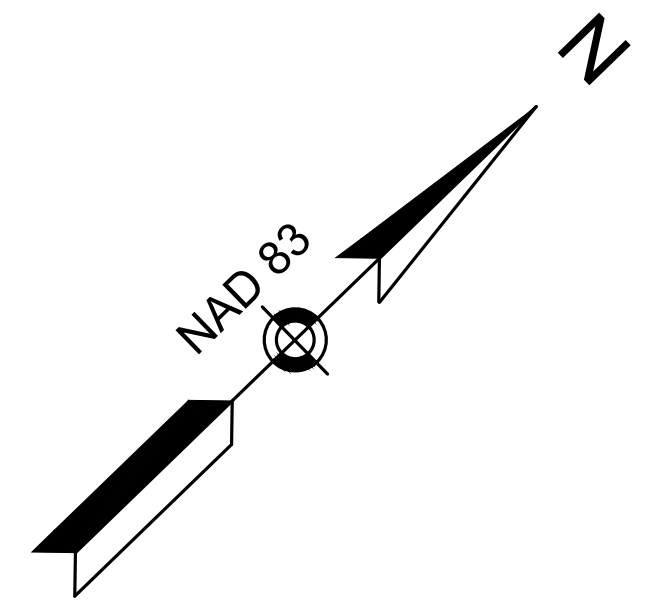


SCALE: 1" = 20'

TISBURY
BEACH ROAD

STATE	FED. AID PROJ. NO.	SHEET NO.	TOTAL SHEETS
MA	CMQ-0035(041)X	5	5
PROJECT FILE NO.		607411	

ALTERNATIVE LAYOUT



~1' shift from existing DYCL

End 5' Shoulders
Transition to meet existing shoulders

5.5' Sidewalk

End 5.5' Sidewalk
Transition to 8' Sidewalk

Begin 8' Sidewalk

N/F
R.M. PACKER CO., INC.
DEED BOOK/PAGE: 370/111
ASSESSOR'S M/B/P: 9/B/34

N/F
R.M. PACKER CO., INC.
DEED BOOK/PAGE: 287/112
ASSESSOR'S M/B/P: 10/B/1
#199

N/F
RALPH M. PACKER, JR.
INDIVIDUALLY
DEED BOOK/PAGE: 223/20
ASSESSOR'S M/B/P: 10/B/2
BEACH ROAD

CONTINUED ON
SHEET 4

