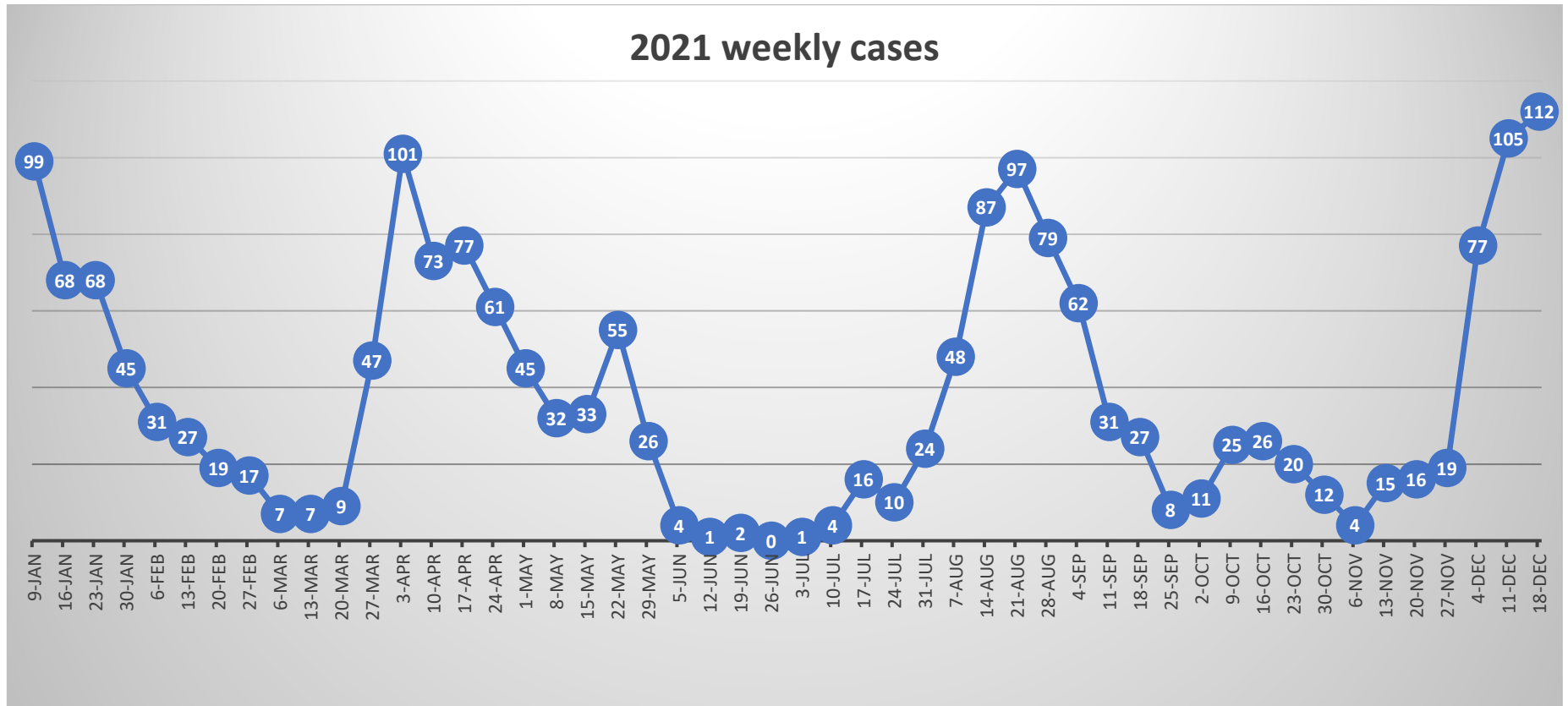


# Martha's Vineyard Boards of Health

Weekly positive COVID-19 Case report



## December 12<sup>th</sup> through December 19<sup>th</sup>, 2021

112 confirmed positive cases (81 MVH, 18 TestMV, 13 Other)

93 in progress, 19 completed

71 symptomatic, 6 asymptomatic, 35 unknown

64 fully vaccinated, 34 unvaccinated, 14 unknown

11 probable OTC positive cases

5 suspect cases

## Cases to date:

2,615 total cases (PCR and probable cases)

6 cases positive for Delta Variant – 9 samples tested, 3 indeterminate

2,442 confirmed positive cases (PCR positive tests)

1,244 Male

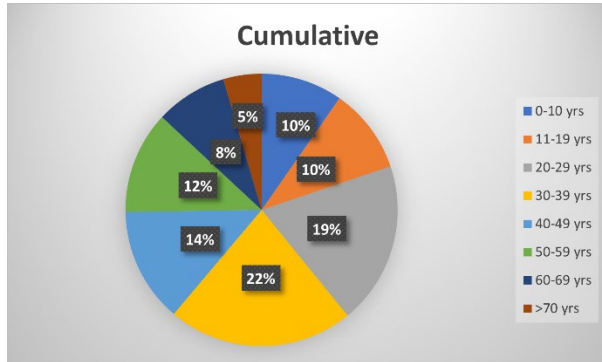
1,197 Female

1 other

## Age Group:

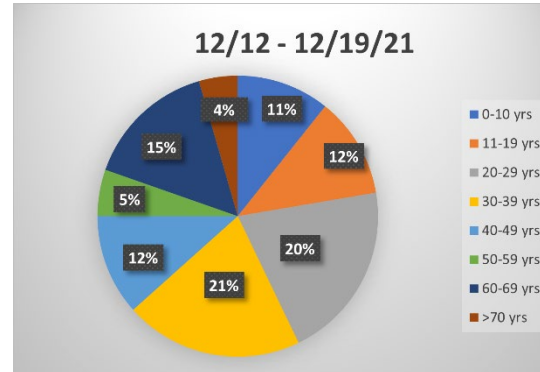
### Cumulative

0-10	237
11-19	247
20-29	471
30-39	538
40-49	332
50-59	297
60-69	208
>70	111
Unknown	1



### Current week

0-10	12
11-19	13
20-29	23
30-39	23
40-49	13
50-59	6
60-69	17
>70	5



### LINKED CASES

807 cases or 33% of positive cases are connected to at least one other case.

(Percentage does not include probable cases included in clusters)

- 2-person group – 139 instances – 278 cases
- 3-person group – 59 instances – 177 cases
- 4-person group – 25 instances – 100 cases
- 5-person group – 12 instance – 60 cases
- 6-person group – 4 instance – 24 cases
- 9-person group – 1 instance – 9 cases
- 10-person group – 1 instance – 10 cases
- 12-person group – 1 instance – 12 cases

### Clusters:

- October Wedding – 8 cases
- Cronig's Market – 19 cases
- Bible Study – 11 cases
- MV Hospital – 5 cases
- Project Headway – 4 cases
- King's Barbershop – 8 cases
- Shirley's Hardware – 6 cases
- Barn Bowl & Bistro – 9 cases
- Cardboard Box – 3 cases
- Alchemy – 15 cases
- Port Hunter – 5 cases – 4 confirmed & 1 probable(OTC+)
- Harborview/Kelley House – 10 cases – 6 confirmed & 4 probable(OTC+)
- Fine Fettle – 4 cases
- Charlotte Inn/Terrace Restaurant – 4 cases
- Fishbones – 3 cases
- Cronig's Market (VH) – 5 cases
- The Sydney – 6 cases
- Nancy's – 3 cases
- The Sand Bar – 3 cases
- Construction site – 6 cases

### 2020 BREAKDOWN

Total Cases 533

March	9 cases	August	15 cases
April	10 cases	September	8 cases
May	10 cases	October	32 cases
June	5 cases	November	191 cases
July	18 cases	December	235 cases

## 2021 BREAKDOWN

January	302 cases 195 symptomatic, 74 asymptomatic, 33 unknown 294 completed, 7 lost to follow-up, 1 referred to off-island health
February	91 cases 48 symptomatic, 32 asymptomatic, 11 unknown 90 completed, 1 lost to follow-up
March	108 cases 72 symptomatic, 27 asymptomatic, 9 unknown 107 completed, 1 lost to follow-up
April	316 cases 199 symptomatic, 71 asymptomatic, 46 unknown 313 completed, 3 lost to follow-up
May	149 cases 94 symptomatic, 41 asymptomatic, 14 unknown 148 completed, 1 referred to off-island health
June	8 cases 5 symptomatic, 3 asymptomatic 8 completed
July	54 cases 46 symptomatic, 41 asymptomatic, 14 unknown 51 completed, 2 lost to follow up, 1 referred to off island health 24 fully vax, 1 part vax, 21 unvaccinated, 1 unknow

August	335 cases 185 symptomatic, 21 asymptomatic, 129 unknown 323 completed, 12 lost to follow up, 163 fully vax, 4 part vax, 107 unvaccinated, 61 unknown
Sept	107 cases 78 symptomatic, 7 asymptomatic, 22 unknown 101 completed, 6 lost to follow up 48 fully vax, 1 partially vax, 35 unvaccinated, 23 unknown
Oct	92 cases 64 symptomatic, 15 asymptomatic, 13 unknown 90 completed, 2 lost to follow up 61 fully vax, 1 partially vax, 24 unvaccinated, 6 unknown
Nov	71 cases 58 symptomatic, 9 asymptomatic, 4 unknown 68 completed, 3 lost to follow up 62 fully vax, 1 partially vax, 8 unvaccinated
December	
12/1 – 12/4	59 cases 34 symptomatic, 3 asymptomatic, 21 unknown 58 completed, 1 lost to follow up 42 fully vax, 2 partially vax, 4 no vax, 5 unknown
12/5 – 12/11	105 cases 66 symptomatic, 13 asymptomatic, 26 unknown 11 in progress, 92 completed, 2 lost to follow up 57 fully vaccinated, 37 unvaccinated, 11 unknown

Completed = No longer symptomatic and released from isolation

Referred to off island health dept = case referred due to patient relocation

In progress = Still being followed by public health

Lost to follow-up = unable to contact

**173 probable positive cases (antibody or OTC positive tests and symptomatic diagnosis)**

Totals may change if individuals become confirmed positives

28 antibody positive    58 symptomatically positive    87 positive OTC tests

89 Male	Age Group	<20	29
84 Female		20-29	38
		30-39	34
		40-49	26
		50-59	18
		60-69	12
		>70	5
		Unknown	11

**TEST SITE DATA:**

**Test MV:**

Medically observed nasal self-swab

Total Tested	45,836
Positive tests	547
Negative tests	45,289

**MV Hospital testing (from MVHospital.org)**

Medically collected nasopharyngeal swab

Total Tested	30,391
Positive tests	1,740
Negative tests	28,643
Hospitalizations	2

(as of Friday, 12/17/21)

**Aquinnah testing**

Self-administered saliva test

Total Tested	756
Positive tests	4
Negative tests	752