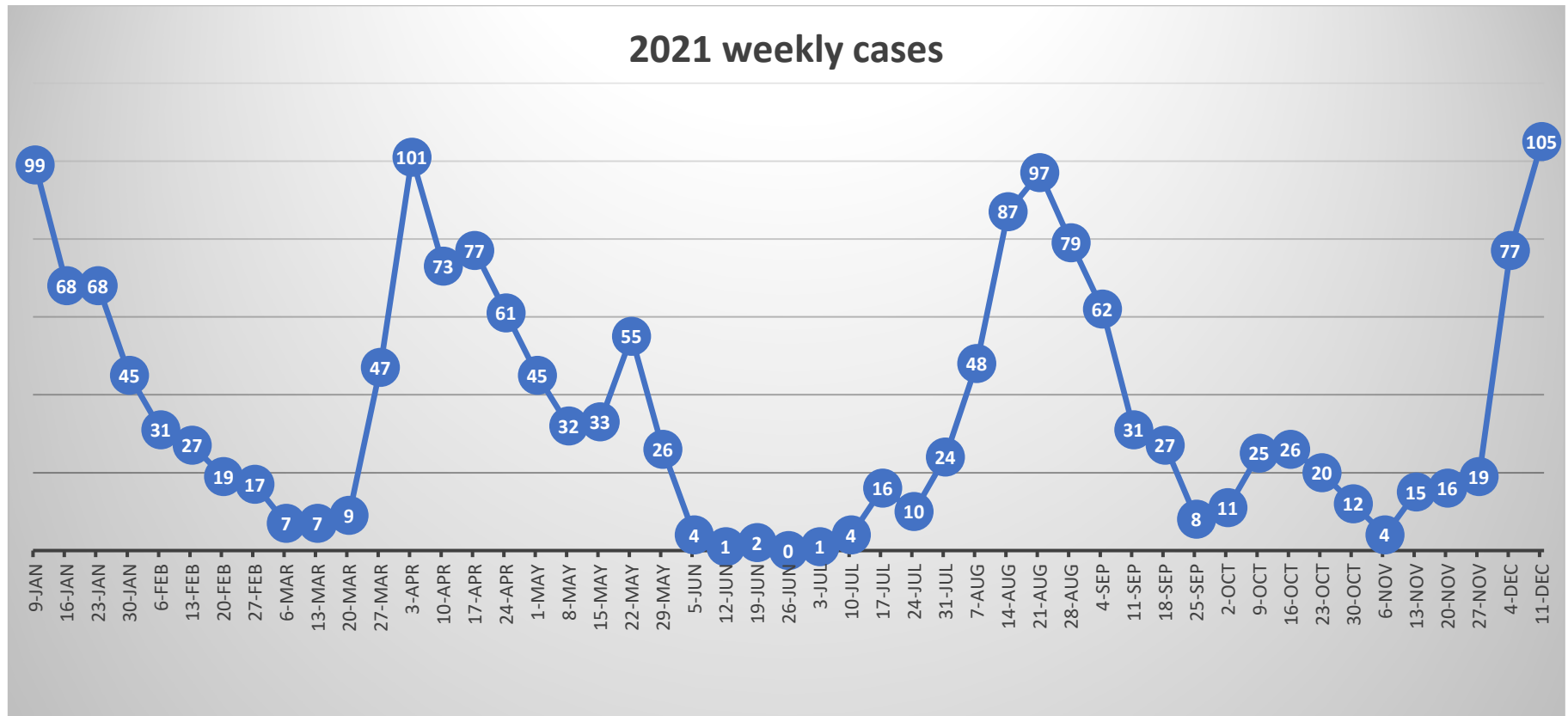


# Martha's Vineyard Boards of Health

## Weekly positive COVID-19 Case report



One OTC positive case reported week ending 12/4 converted to a confirmed positive so the total confirmed cases reported increased by one.

### December 5<sup>th</sup> through December 11<sup>th</sup>, 2021

105 confirmed positive cases (80 MVH, 13 TestMV, 12 Other)

81 in progress, 22 completed, 2 Lost to Follow Up

61 symptomatic, 12 asymptomatic, 32 unknown

55 fully vaccinated, 37 unvaccinated, 13 unknown

21 probable OTC positive cases

1 suspect case

### Cases to date:

2,492 total cases (PCR and probable cases)

6 cases positive for Delta Variant – 9 samples tested, 3 indeterminate

2,330 confirmed positive cases (PCR positive tests)

1,192 Male

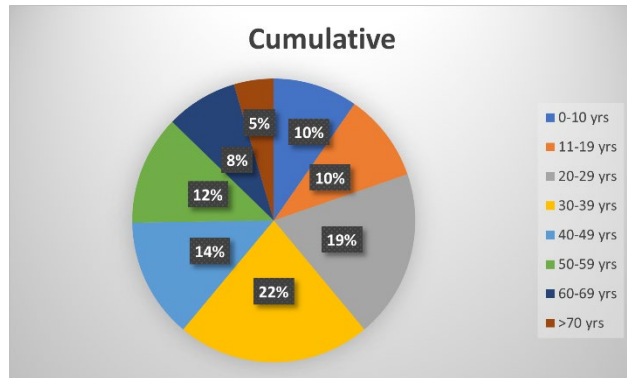
1,137 Female

1 other

## Age Group:

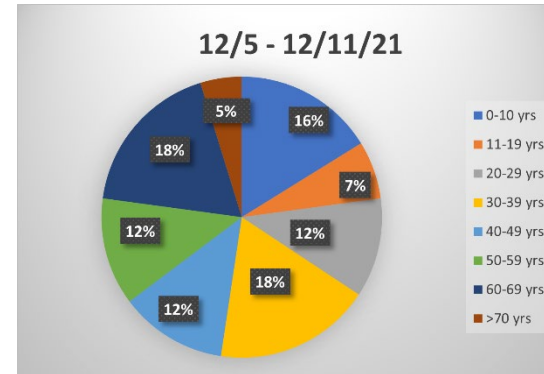
### Cumulative

0-10	225
11-19	234
20-29	448
30-39	515
40-49	319
50-59	291
60-69	191
>70	106
Unknown	1



### Current week

0-10	17
11-19	7
20-29	12
30-39	19
40-49	13
50-59	13
60-69	19
>70	5



### LINKED CASES

789 cases or 34% of positive cases are connected to at least one other case.

(Percentage does not include probable cases included in clusters)

- 2-person group – 137 instances – 274 cases
- 3-person group – 57 instances – 171 cases
- 4-person group – 23 instances – 92 cases
- 5-person group – 12 instance – 60 cases
- 6-person group – 4 instance – 24 cases
- 9-person group – 1 instance – 9 cases
- 10-person group – 1 instance – 10 cases
- 12-person group – 1 instance – 12 cases

### Clusters:

- October Wedding – 8 cases
- Cronig's Market – 19 cases
- Bible Study – 11 cases
- MV Hospital – 5 cases
- Project Headway – 4 cases
- King's Barbershop – 8 cases
- Shirley's Hardware – 6 cases
- Barn Bowl & Bistro – 9 cases
- Cardboard Box – 3 cases
- Alchemy – 15 cases
- Port Hunter – 5 cases – 4 confirmed & 1 probable(OTC+)
- Harborview/Kelley House – 10 cases – 6 confirmed & 4 probable(OTC+)
- Fine Fettle – 4 cases
- Charlotte Inn/Terrace Restaurant – 4 cases
- Fishbones – 3 cases
- Cronig's Market (VH) – 5 cases
- The Sydney – 6 cases
- Nancy's – 3 cases
- The Sand Bar – 3 cases
- Construction site – 6 cases

### 2020 BREAKDOWN

Total Cases 533

March	9 cases	August	15 cases
April	10 cases	September	8 cases
May	10 cases	October	32 cases
June	5 cases	November	191 cases
July	18 cases	December	235 cases

## 2021 BREAKDOWN

January	302 cases 195 symptomatic, 74 asymptomatic, 33 unknown 294 completed, 7 lost to follow-up, 1 referred to off-island health
February	91 cases 48 symptomatic, 32 asymptomatic, 11 unknown 90 completed, 1 lost to follow-up
March	108 cases 72 symptomatic, 27 asymptomatic, 9 unknown 107 completed, 1 lost to follow-up
April	316 cases 199 symptomatic, 71 asymptomatic, 46 unknown 313 completed, 3 lost to follow-up
May	149 cases 94 symptomatic, 41 asymptomatic, 14 unknown 148 completed, 1 referred to off-island health
June	8 cases 5 symptomatic, 3 asymptomatic 8 completed
July	54 cases 46 symptomatic, 41 asymptomatic, 14 unknown 51 completed, 2 lost to follow up, 1 referred to off island health 24 fully vax, 1 part vax, 21 unvaccinated, 1 unknow

August	335 cases 185 symptomatic, 21 asymptomatic, 129 unknown 323 completed, 12 lost to follow up, 163 fully vax, 4 part vax, 107 unvaccinated, 61 unknown
Sept	107 cases 78 symptomatic, 7 asymptomatic, 22 unknown 101 completed, 6 lost to follow up 48 fully vax, 1 partially vax, 35 unvaccinated, 23 unknown
Oct	92 cases 64 symptomatic, 15 asymptomatic, 13 unknown 90 completed, 2 lost to follow up 61 fully vax, 1 partially vax, 24 unvaccinated, 6 unknown
Nov	71 cases 58 symptomatic, 9 asymptomatic, 4 unknown 68 completed, 3 lost to follow up 62 fully vax, 1 partially vax, 8 unvaccinated
December	
12/1 – 12/4	59 cases 28 symptomatic, 3 asymptomatic, 27 unknown 11 in progress, 47 completed, 1 lost to follow up 42 fully vax, 2 partially vax, 4 no vax, 5 unknown

Completed = No longer symptomatic and released from isolation

Referred to off island health dept = case referred due to patient relocation

In progress = Still being followed by public health

Lost to follow-up = unable to contact

**162 probable positive cases (antibody or OTC positive tests and symptomatic diagnosis)**

Totals may change if individuals become confirmed positives

28 antibody positive    58 symptomatically positive    76 positive OTC tests

85 Male	Age Group	<20	26
77 Female		20-29	38
		30-39	29
		40-49	25
		50-59	17
		60-69	11
		>70	5
		Unknown	11

**TEST SITE DATA:**

**Test MV:**

Medically observed nasal self-swab

Total Tested	45,584
Positive tests	529
Negative tests	45,055

**MV Hospital testing (from MVHospital.org)**

Medically collected nasopharyngeal swab

Total Tested	29,781
Positive tests	1,639
Negative tests	28,134

(as of Thursday, 12/9/21)

**Aquinnah testing**

Self-administered saliva test

Total Tested	756
Positive tests	4
Negative tests	752

**MV Public School testing**

nasal swab

Total Tested	1,251
Positive tests	1
Negative tests	1,250

(as of 10/29/21)