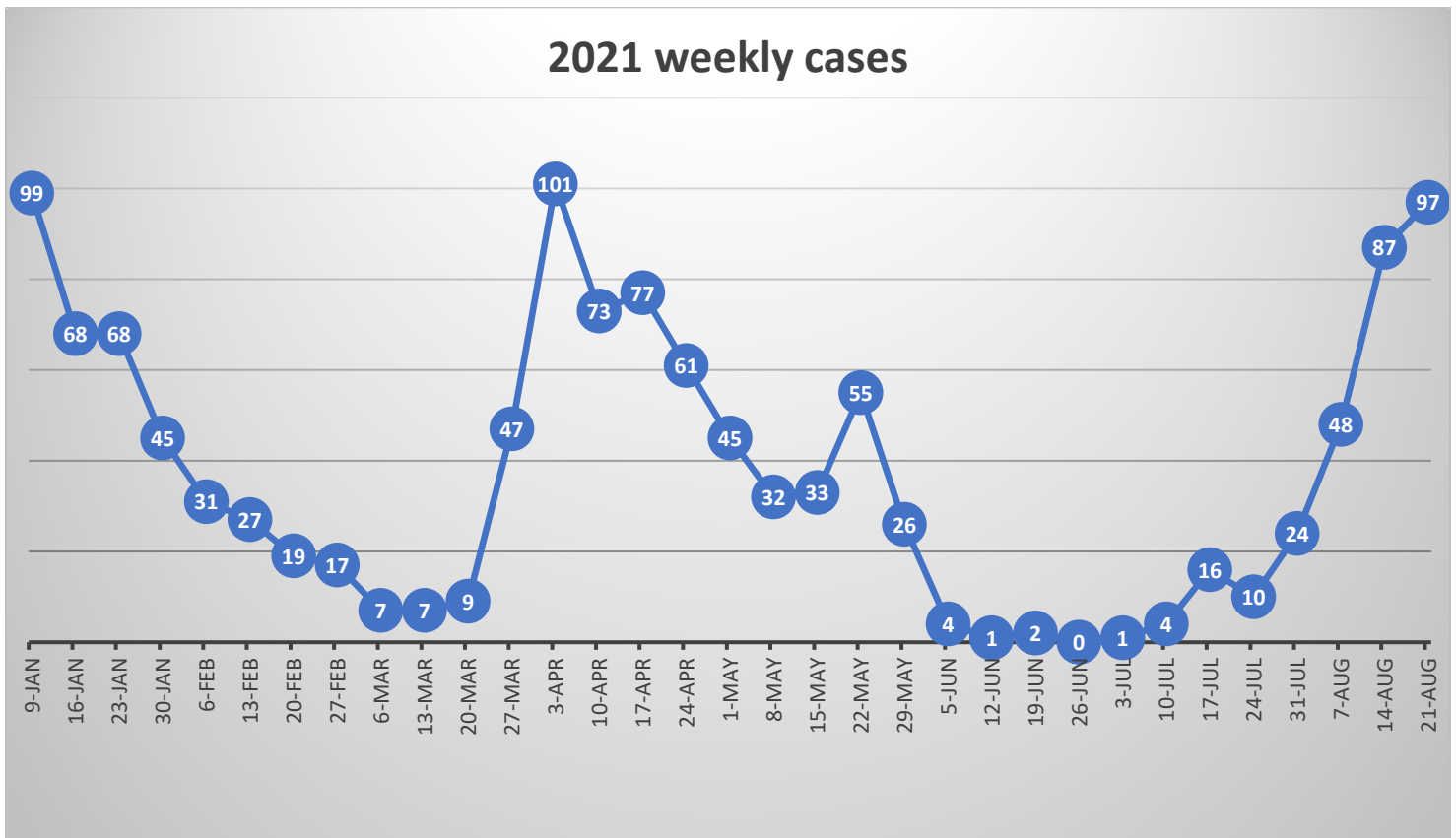


Martha's Vineyard Boards of Health

Weekly positive COVID-19 Case report



August 15th through August 21st, 2021

97 confirmed positive cases (69 MVH, 24 TestMV, 1 Tribe, 3 other providers)

81 in progress, 16 completed

44 symptomatic, 6 asymptomatic, 47 unknown

41 fully vaccinated, 2 partially vaccinated, 28 unvaccinated, 26 unknown

1 probable case (positive OTC tests)

1,887 total cases to date

6 cases positive for Delta Variant - 9 samples tested, 3 indeterminate

1,793 confirmed positive cases (PCR positive tests)

920 Male

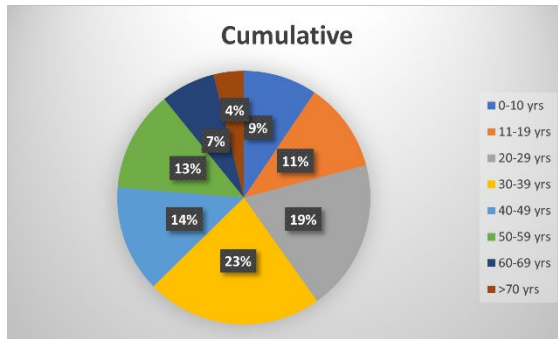
872 Female

1 other

Age Group:

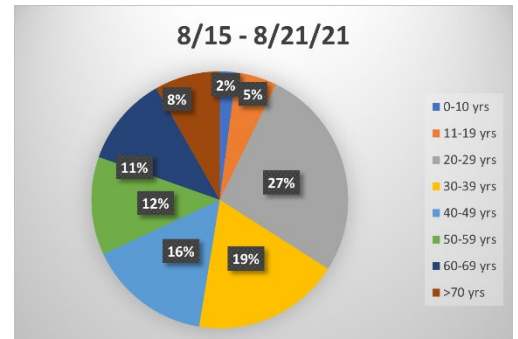
Cumulative

0-10	169
11-19	205
20-29	346
30-39	403
40-49	244
50-59	231
60-69	125
>70	69
Unknown	1



Current week

0-10	2
11-19	5
20-29	26
30-39	18
40-49	15
50-59	12
60-69	11
>70	8



LINKED CASES

643 cases or 36% of positive cases are connected to at least one other case.

(Percentage does not include probable cases included in clusters)

- 2-person group – 108 instances – 216 cases
- 3-person group – 43 instances – 129 cases
- 4-person group – 21 instances – 84 cases
- 5-person group – 10 instance – 50 cases
- 6-person group – 4 instance – 24 cases
- 9-person group – 1 instance – 9 cases
- 10-person group – 1 instance – 10 cases
- 12-person group – 1 instance – 12 cases

Clusters:

- October Wedding – 8 cases
- Cronig's Market – 19 cases
- Bible Study – 11 cases
- MV Hospital – 5 cases
- Project Headway – 4 cases
- King's Barbershop – 8 cases (2 staff, 2 customers, 4 family members)
- Shirley's Hardware – 6 cases (all staff)
- Barn Bowl & Bistro – 9 cases (6 staff, 3 family members)
- Cardboard Box – 3 cases (all staff)
- Alchemy – 15 cases (all staff)
- Port Hunter – 5 cases – 4 confirmed(PCR+) & 1 probable(OTC+) (all staff)
- Harborview/Kelley House – 10 cases – 6 confirmed(PCR+) & 4 probable(OTC+) (all staff)
- Fine Fettle – 4 cases
- Charlotte Inn – 4 cases (all staff)
- Fishbones – 3 cases (all staff)

2020 BREAKDOWN

Total Cases 533

March	9 cases	August	15 cases
April	10 cases	September	8 cases
May	10 cases	October	32 cases
June	5 cases	November	191 cases
July	18 cases	December	235 cases

2021 BREAKDOWN

January	302 cases 195 symptomatic, 74 asymptomatic, 33 unknown 294 completed, 7 lost to follow-up, 1 referred to off-island health
February	91 cases 48 symptomatic, 32 asymptomatic, 11 unknown 90 completed, 1 lost to follow-up
March	108 cases 72 symptomatic, 27 asymptomatic, 9 unknown 107 completed, 1 lost to follow-up
April	316 cases 199 symptomatic, 71 asymptomatic, 46 unknown 313 completed, 3 lost to follow-up
May	149 cases 94 symptomatic, 41 asymptomatic, 14 unknown 148 completed, 1 referred to off-island health
June	8 cases 5 symptomatic, 3 asymptomatic 8 completed
July	54 cases 46 symptomatic, 4 asymptomatic, 4 unknown 51 completed, 2 lost to follow up, 1 referred to off island health 24 fully vaccinated, 1 partially vaccinated, 21 unvaccinated, 8 unknown
August	
8/1 – 8/7	48 cases 38 symptomatic, 2 asymptomatic, 8 unknown 47 completed, 1 lost to follow up 25 fully vaccinated, 1 partially vaccinated, 20 unvaccinated, 2 unknown
8/8 – 8/14	87 cases 47 symptomatic, 5 asymptomatic, 35 unknown 1 in progress, 78 completed, 8 lost to follow up 46 fully vaccinated, 26 unvaccinated, 15 unknown

Completed = No longer symptomatic and released from isolation

Referred to off island health dept = case referred due to patient relocation

In progress = Still being followed by public health

Lost to follow-up = unable to contact

94 probable positive cases (antibody positive tests & symptomatic diagnosis)

28 antibody positive 55 symptomatically positive 11 positive OTC tests

55 Male	Age Group	<20	13
39 Female		20-29	23
		30-39	14
		40-49	17
		50-59	9
		60-69	8
		>70	4
		Unknown	6

TEST SITE DATA:

High School test site:

Medically observed nasal self-swab
Total Tested 41,193
Positive tests 429
Negative tests 40,764

MV Hospital testing (from MVHospital.com)

Medically collected nasopharyngeal swab
Total Tested 23,918
Positive tests 1,298
Negative tests 22,612
(as of Friday, 8/20/21)

Aquinnah testing:

Self-administered saliva test
Total Tested 656
Positive tests 4
Negative tests 652

MV Public Schools testing:

Self-administered saliva test
Total Tested 16,122
Positive tests 18
Negative tests 16,104